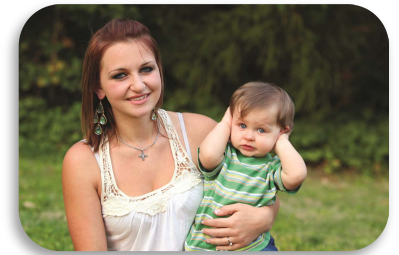


Practice Exchange Forum:

Responding to CALD women
who have experienced family violence



Presented by:



**WOMEN'S HEALTH
IN THE NORTH**



Overview

Setting the scene

Sarah Johnson, Regional Integration Coordinator

Activity

Identify barriers for CALD women in engaging with services

Presentations

Regina Quiazon, Multicultural Centre for Women's Health

Luba Tanevski, InTouch Multicultural Centre Against Family Violence

[BREAK]

Practice Exchange

Discuss responses to a case study (pairs)

Discuss what you might do differently in the future (tables)

Make recommendations for a) CALD services and b) family violence response services



About NIFVS

Northern Integrated Family Violence Services (NIFVS) is the partnership that leads the integration of family violence and related services in Melbourne's northern metropolitan region.

Our Vision

For women and children to live safe and free from family violence.

Our Mission

To maintain and continually develop the integrated family violence service system in the north, in order to improve the safety of women and children.

The partnership is led by the 'Regional Integration Committee made up of representatives service types or sectors.

voice • choice • power





What is integration?

Family violence integration in the North involves:

- a **shared understanding** of family violence and a shared vision for change
- all parties **understanding** and striving to improve the system
- strong **structures and relationships** across the system
- **information-sharing and collaboration** across a broad range of organisations
- opportunities to discuss and **resolve issues**
- ensuring a **'continuum of care'** through smooth referral pathways and consistent service responses

voice • choice • power





Resources for integration

There are a number of ways you can support integration:

- Use Women's and Men's Family Violence Help Cards
- Attend Identifying Family Violence Training
- Attend Regional Family Violence Sector Induction
- Join a local family violence network
- Visit the NIFVS website
- Host a Week Without Violence event (3rd week of October)
- Read monthly NIFVS eNews

voice • choice • power





Why are we here?

“Improving service responses to women from CALD backgrounds” - a NIFVS priority area for 2015-16

Increased interest in responding to CALD women at a National, Statewide and Regional level.

To gather ideas to develop a resource for services to better respond to CALD women who have experienced family violence.

voice • choice • power





What to expect

To build connections across sectors and services.

To share knowledge and practice to better engage and respond to women who have experienced family violence.

To explore:

- What we know about family violence and women from CALD backgrounds
- Barriers to engaging and supporting women from CALD backgrounds
- How we can improve our own practice



What do we know?

Family violence occurs in ALL cultures.

The incidence of **family violence amongst refugee and migrant families is not higher** when compared with non-migrant women.

However, the consequences for women from amongst refugee and migrant backgrounds can be more damaging **because they are likely to face greater barriers to accessing safety.**

1. Lisa Cavallaro, *"I lived in fear because I knew nothing" Barriers to the Justice System Faced by CALD Women Experiencing Family Violence*, InTouch Inc. Multicultural Centre Against Family Violence, 2010



Next steps

Complete your take away postcard!

Northern Integrated Family Violence Services	
As a result of today's session, I will:	
<hr/>	
<hr/>	
<hr/>	
For future referrals/secondary consultation/partnerships I will stay in contact with:	
Name	Organisation
Email	Role
Phone	

Visit our website at www.nifvs.org.au to:

- Access notes and presentations from today's forum
- Find resources on working with CALD women

Contact Details

Northern Integrated Family Violence Services

Women's Health In the North

680 High Street
Thornbury 3071
Tel. 9484 1666

www.nifvs.org.au

info@whin.org.au



WOMEN'S HEALTH
IN THE NORTH



Women's Health In the North acknowledges the support of the Victorian Government.

voice • choice • power